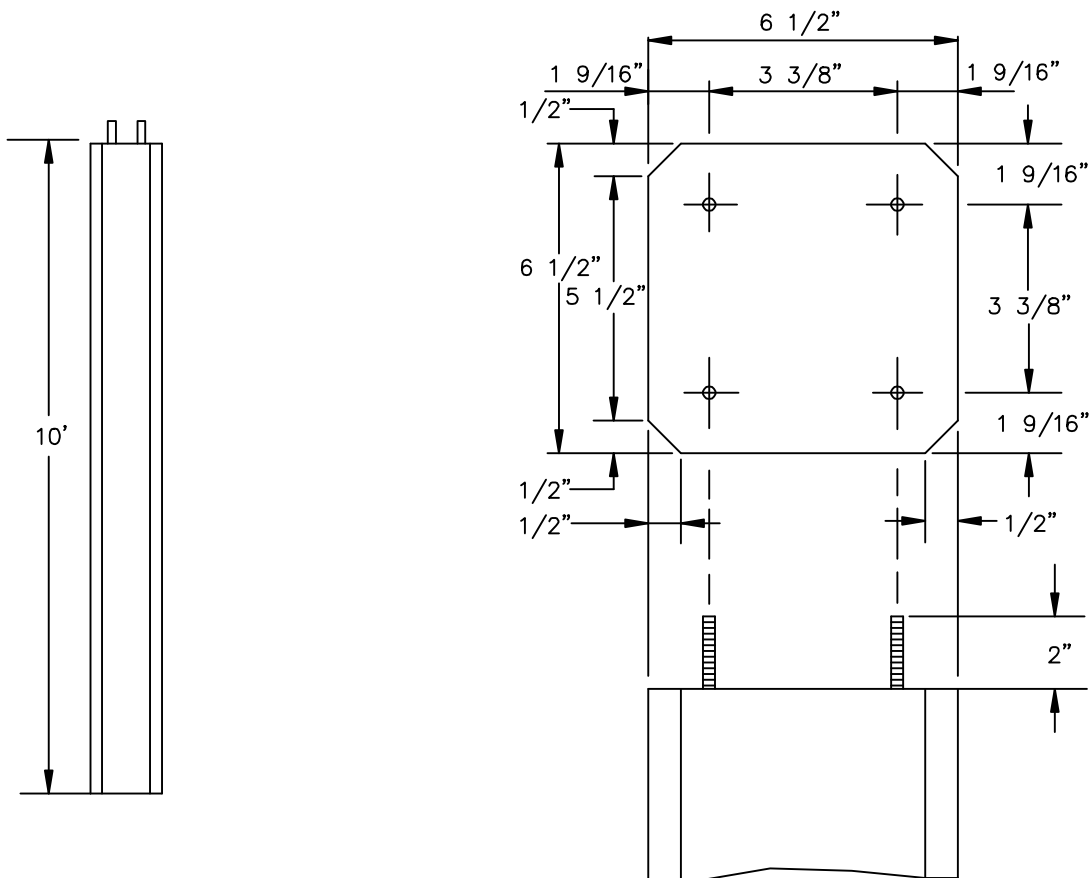


**SHOREY  
PRECAST  
CONCRETE  
PRODUCTS**

**TOWN LINE POST**



### **SPECIFICATIONS**

Concrete Minimum Strength: 4,000 P.S.I @ 28 days

Steel Reinforcement: AS-615-68, Grade 60

Design Loading: AASHTO - H-10

Weight: 435 lbs.

**SHOREY PRECAST CONCRETE PRODUCTS**

351 Whites Path

S. Yarmouth, MA 02664

(800) 439-0965 • (508) 760-1070