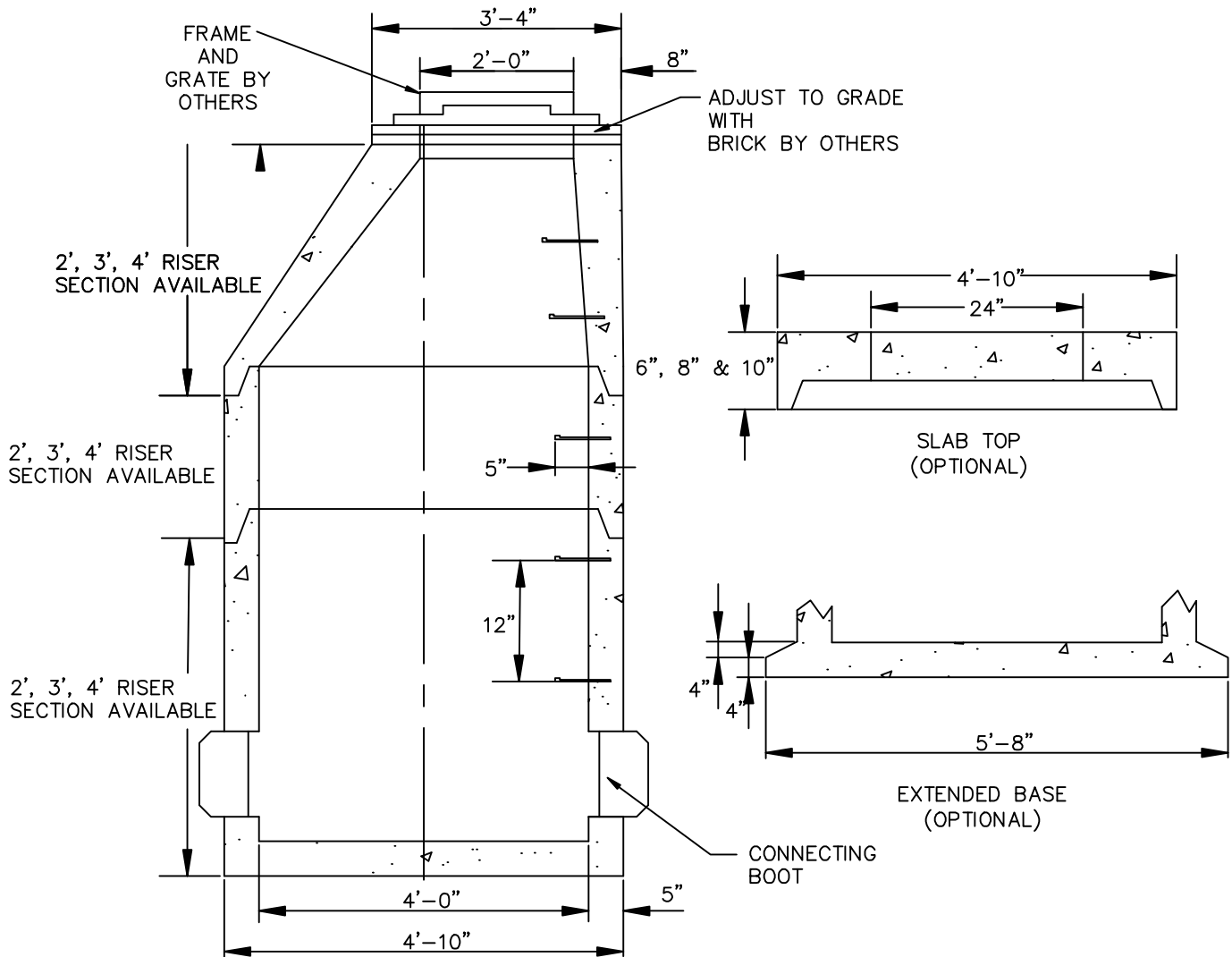


SEWER MANHOLE - 4'-0" DIA. (H-20)

SMH-4DIA-H-20



OPTIONAL:
Connecting Boots: Press-Seal PSX ASTM C923
Tar Coating: Conseal CS-55
Joint Seal: Pro Sticl Butyl Sealant
Steps: Copolymer Polypropylene ASTM C-478

SPECIFICATIONS

- Concrete Minimum Strength: 5,000 P.S.I @ 28 days
- Steel Reinforcement: AS-615-68, Grade 60
- Design Loading: AASHTO - H-20 Meets ASTM Spec. C1227
- Meets ASTM C-478