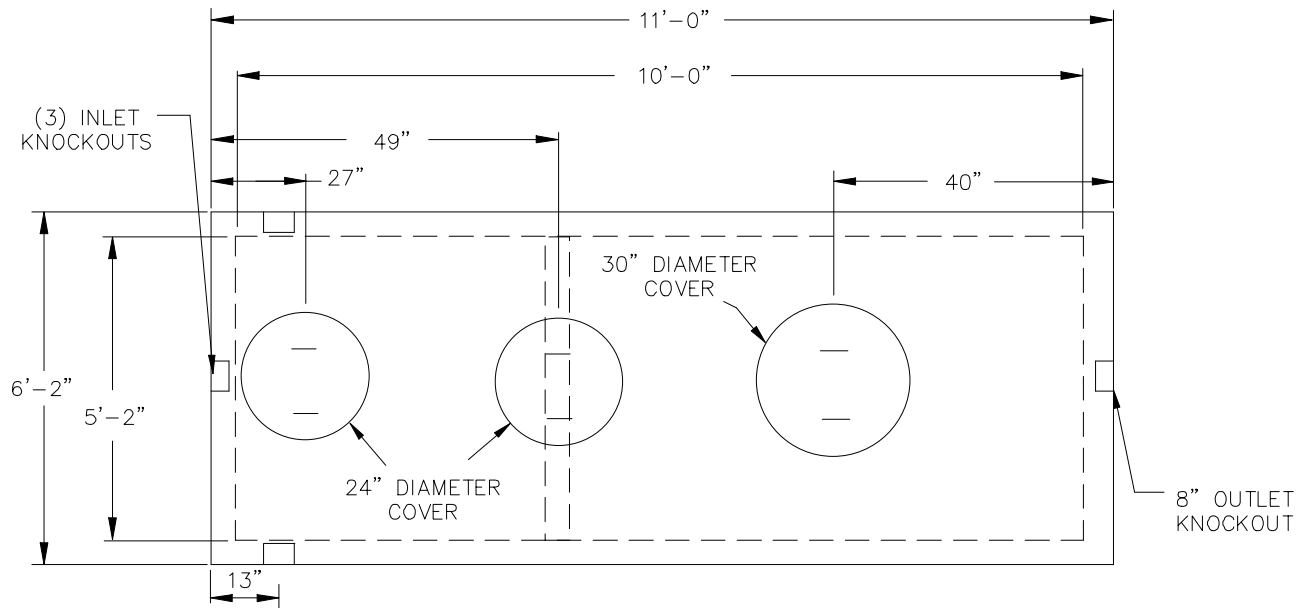
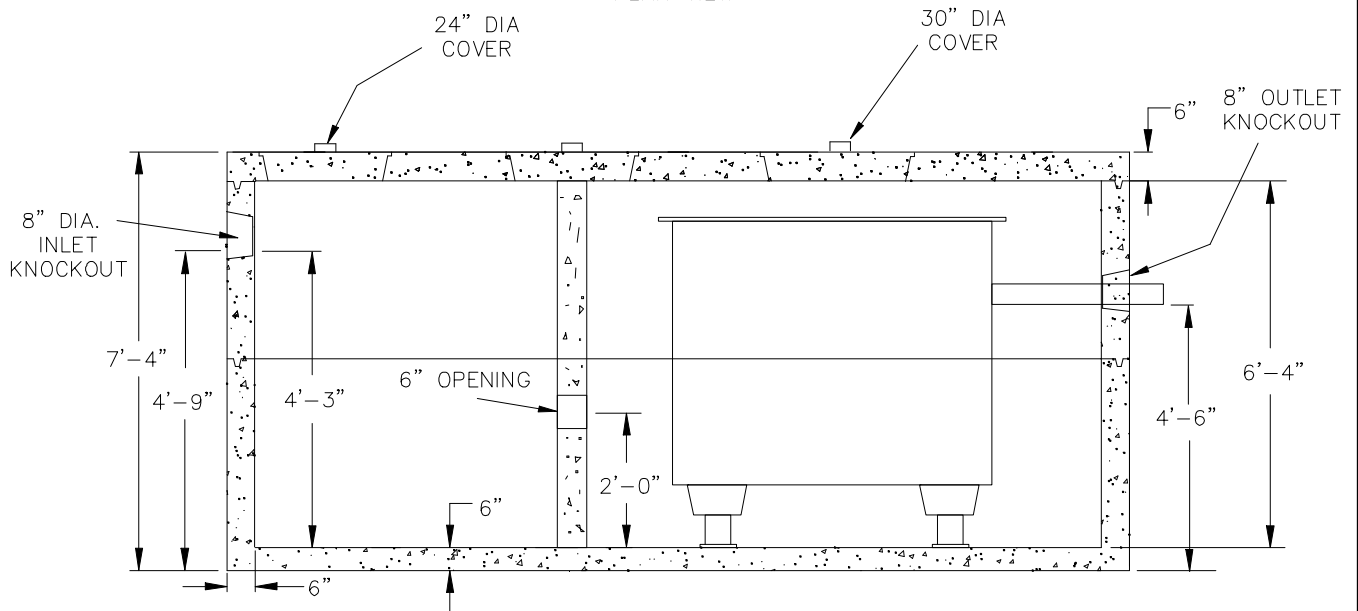


# 1,500 GALLON (H-20) FAST TANK

# 2-COMPARTMENT 3 PC TANK



PLAN VIEW



CROSS SECTION VIEW

## SPECIFICATIONS

- Concrete Minimum Strength: 5,000 P.S.I @ 28 days
- Steel Reinforcement: AS-615-68, Grade 60
- Design Loading: AASHTO - H-20 Meets ASTM Spec. C1227
- Weight: 38,360 lbs.