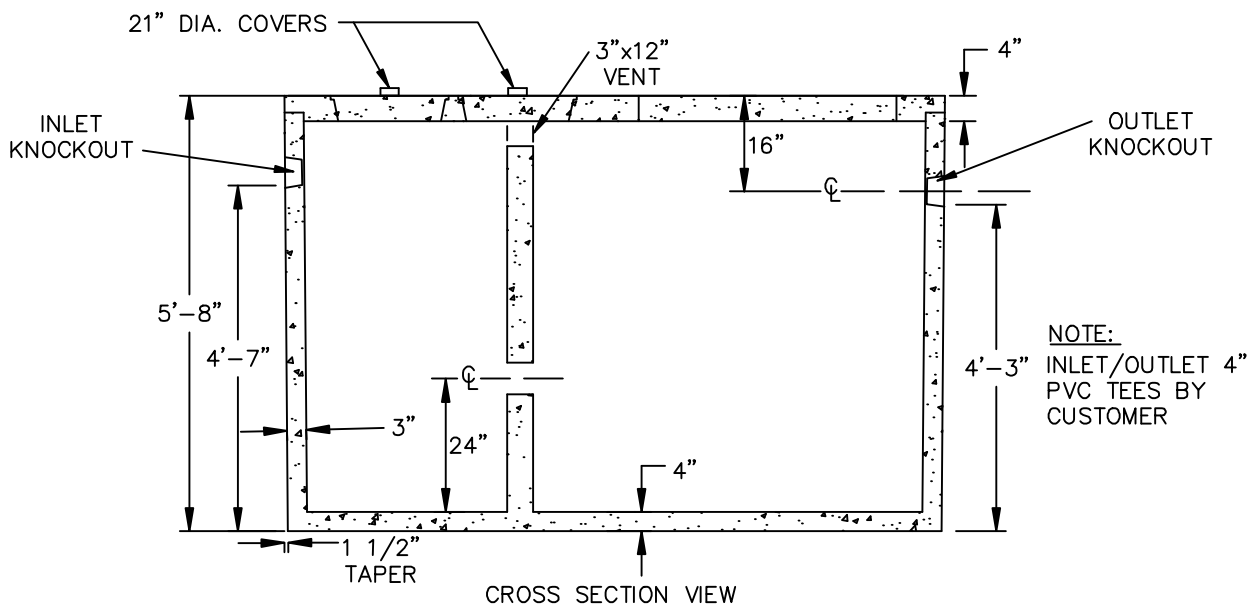
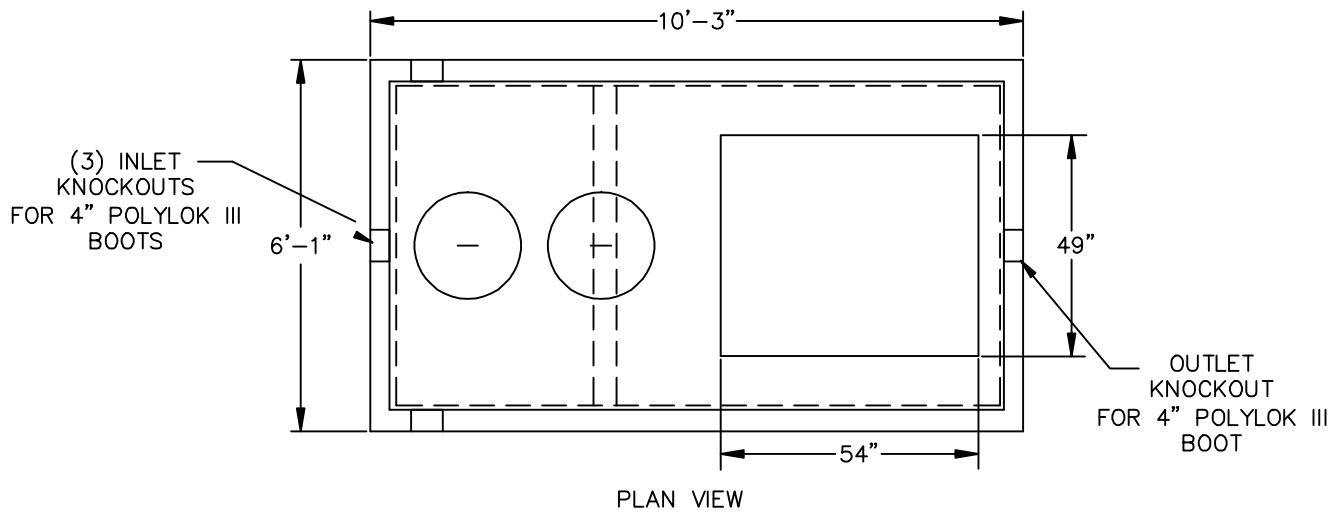


1,500 GALLON (H-10) FAST TANK (1.0) MONO TANK

(TOP MOUNT)



SPECIFICATIONS

- Concrete Minimum Strength: 4,000 P.S.I @ 28 days
- Steel Reinforcement: AS-615-68, Grade 60
- Design Loading: AASHTO - H-10
- Meets ASTM Spec. C1227
- Weight: 13,170 lbs.