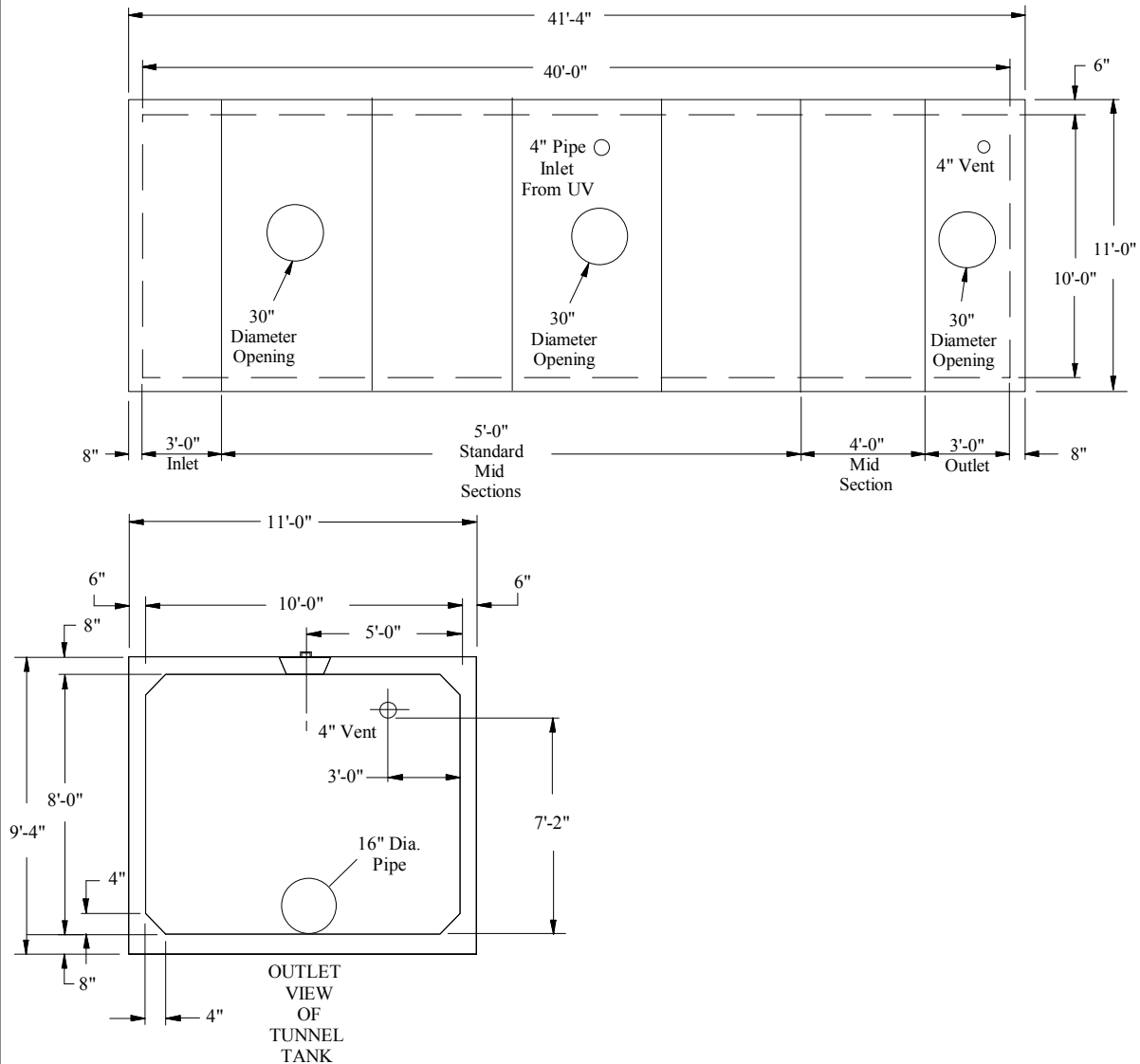


**SHOREY
PRECAST
CONCRETE
PRODUCTS**

**TUNNEL TANK
20,000 Gallons**



- Concrete Minimum Strength: 5,000 P.S.I @ 28 days
- Steel Reinforcement: AS-615-68, Grade 60
- Design Loading: AASHTO - H-20
- Meets ASTM Spec. C1227
- Total Tank Weight : 151,455 lbs
- Waterproof Tar Coating : CS-55

SHOREY PRECAST CONCRETE PRODUCTS

351 Whites Path
S. Yarmouth, MA 02664
(800) 439-0965 • (508) 760-1070