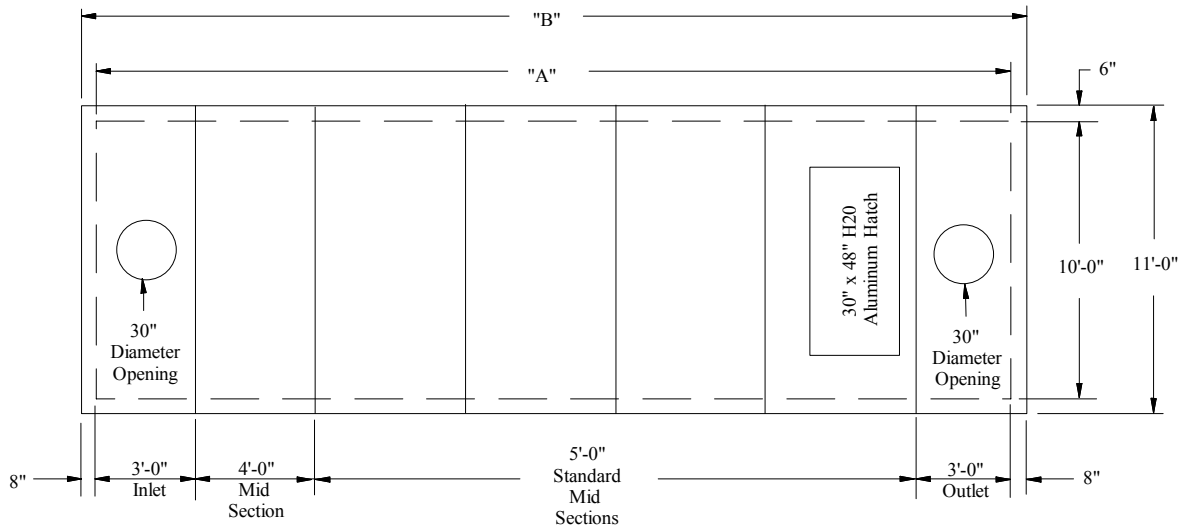


**SHOREY
PRECAST
CONCRETE
PRODUCTS**

**TUNNEL TANK
Effluent Lift
Station
12,000 Gallons
Top View**



| GALLONS | "A" | "B" | 3'-0" | 3'-0" | 4'-0" | 5'-0" | Total Tank Weight |
|---------|--------|--------|----------------|-----------------|-----------------|-----------------|-------------------|
| | | | Start/ Ends | Mid Sections | Mid Sections | Mid Sections | |
| | | | 20,715 lbs | 9,710 lbs | 12,945 lbs | 16,180 lbs | |
| 12,000 | 24'-0" | 25'-4" | 2 | 0 | 2 | 2 | 99,680 lbs |

- Concrete Minimum Strength: 5,000 P.S.I @ 28 days
- Steel Reinforcement: AS-615-68, Grade 60
- Design Loading: AASHTO - H-20
- Meets ASTM Spec. C1227

SHOREY PRECAST CONCRETE PRODUCTS

351 Whites Path

S. Yarmouth, MA 02664

(800) 439-0965 • (508) 760-1070