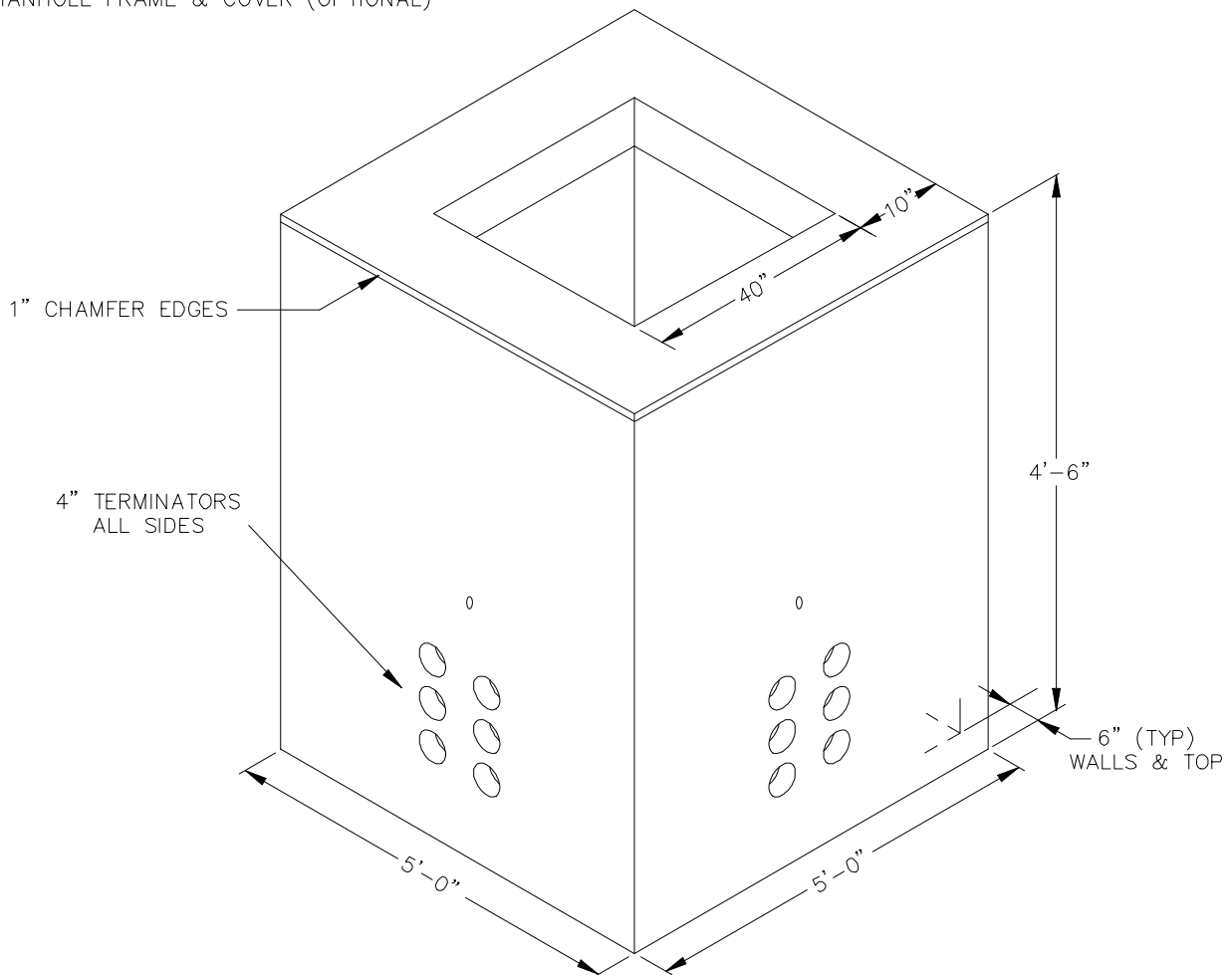


# SHOREY PRECAST CONCRETE PRODUCTS

## PRIMARY/SECONDARY PULL BOX

NE-15C

MANHOLE FRAME & COVER (OPTIONAL)



### SPECIFICATIONS

- Concrete Minimum Strength: 4,000 P.S.I @ 28 days
- Cement: Portland Type II per ASTM C150-81
- Steel Reinforcement: AS-615-68, Grade 60
- Design Loading: AASHTO - H-20
- Meets ASTM Spec. C1227
- Weight: 6,936 lbs

## SHOREY PRECAST CONCRETE PRODUCTS

351 Whites Path

S. Yarmouth, MA 02664

(800) 439-0965 • (508) 760-1070